

RISE^{HPL}

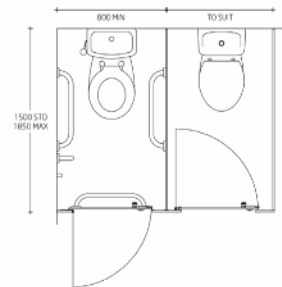
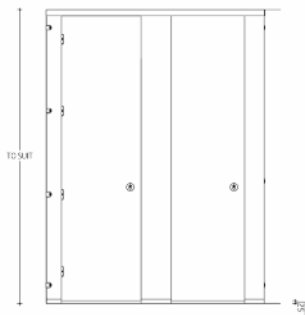
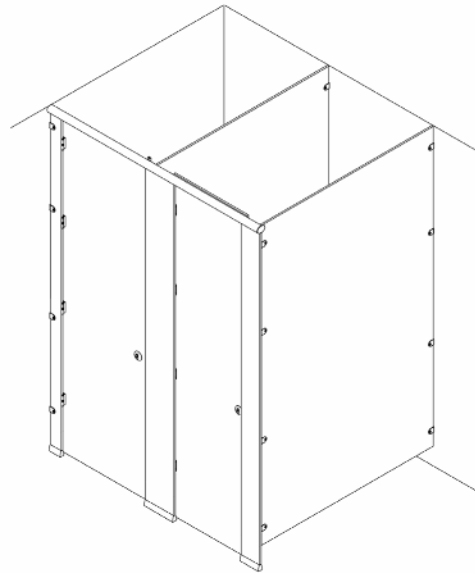
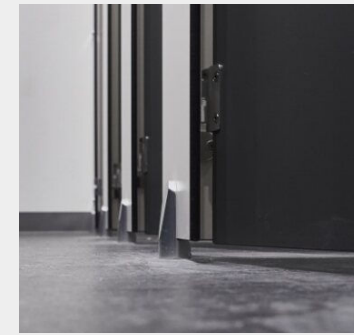
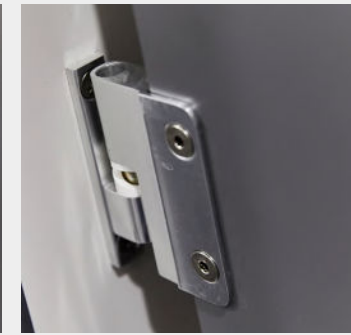
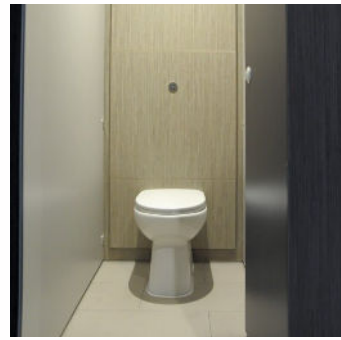


A floor to ceiling cubicle system combining privacy with style.



RISE HPL

Full Height High Pressure laminate cubicles with a minimal floor clearance for dry and low traffic washroom areas



SPECIFICATION

Pilasters/Divisions/Doors:

- HPL Core/Face: High density particleboard faced both sides with high pressure laminate giving 18mm nominal thickness (only recommended for dry area washrooms)
- Edge: Matching 2mm thick impact resistant ABS lipping
- Colour: From the Cube colour selector

Hardware:

All fittings manufactured from high quality polished aluminium

- Pedestals: Solid rolled pedestal giving 25mm floor clearance
- Hinges: High strength insert with anti-breakout sleeve and self-closing cams
- Indicator Bolt: Easy slide action lock with integrated buffer and emergency door release facility
- Partition Fixing: Partitions secured with aluminium D brackets and stainless steel bolt-thru fixings
- Headrail: D section headrail for maximum strength
- Coat Hook: Matching coat hook, 1 per cubicle

TOILET CUBICLES SOLUTION FOR:

- Industrial
- Office
- Retail
- Government

Call: 01692 774920 | Email: info@cube-install.com

Cube Install Limited
Belmore Place, 6 Bunkell Road, Rackheath Ind Estate, Norwich, NR13 6PX
www.cube-install.com
Registered in England No. 105718

