

# HIVE<sup>®</sup> PRIVACY

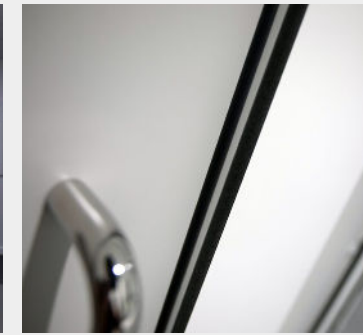


Safety, security and strength combined with total privacy.

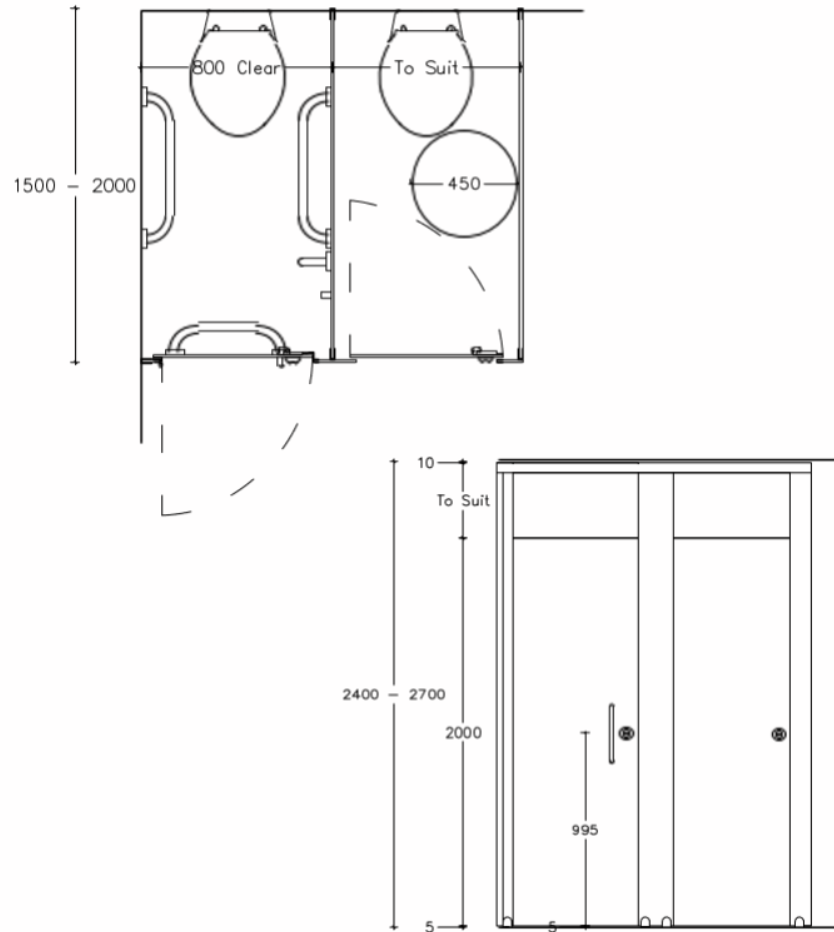


**HIVE® PRIVACY**

**Perfect  
Washroom  
Privacy**



®



## SPECIFICATION

### Pilasters/Divisions/Doors:

- SGL Core/Face: Wipe clean solid grade laminate with colour finish to both sides giving 12.5mm.
- Edge: Polished and radiused.
- Colours: From Cube colour selector – same colour dividing panels and pilaster with contrasting doors.

### Hardware:

All fittings manufactured from high quality satin anodized aluminium

- Smart-phone Integral seal to prevent intrusion of smart phones.
- All fittings manufactured from anti rust & vandal proof satin anodised aluminium.
- Pedestals: Low profile aluminium giving 5mm floor clearance.
- Hinges: 3nr high strength aluminium, anti-finger trap hinges per door with self-closing cams and lift
- off facility for emergency access.
- Indicator Bolt: Easy slide action lock with integrated buffer, emergency door release facility using security key and red/white indicator suitable for users with visual impairment.
- Partition Fixing: Partitions secured with full length aluminium channels with anti-tamper security fixings for maximum strength and privacy.
- Coat Hook: Matching coat hook, 1 per cubicle.
- Anti-phone technology & no peep gaps
- Full length channels to all junctions or maximum durability and privacy
- Anti-finger trap, self-closing hinges
- Easy slide action lock with red/white indicator and tamper proof release
- Emergency accessible doors
- Security fixings throughout to prevent tampering

## TOILET CUBICLES SOLUTION FOR:

- Schools
- Colleges & Universities
- Unisex Washrooms