

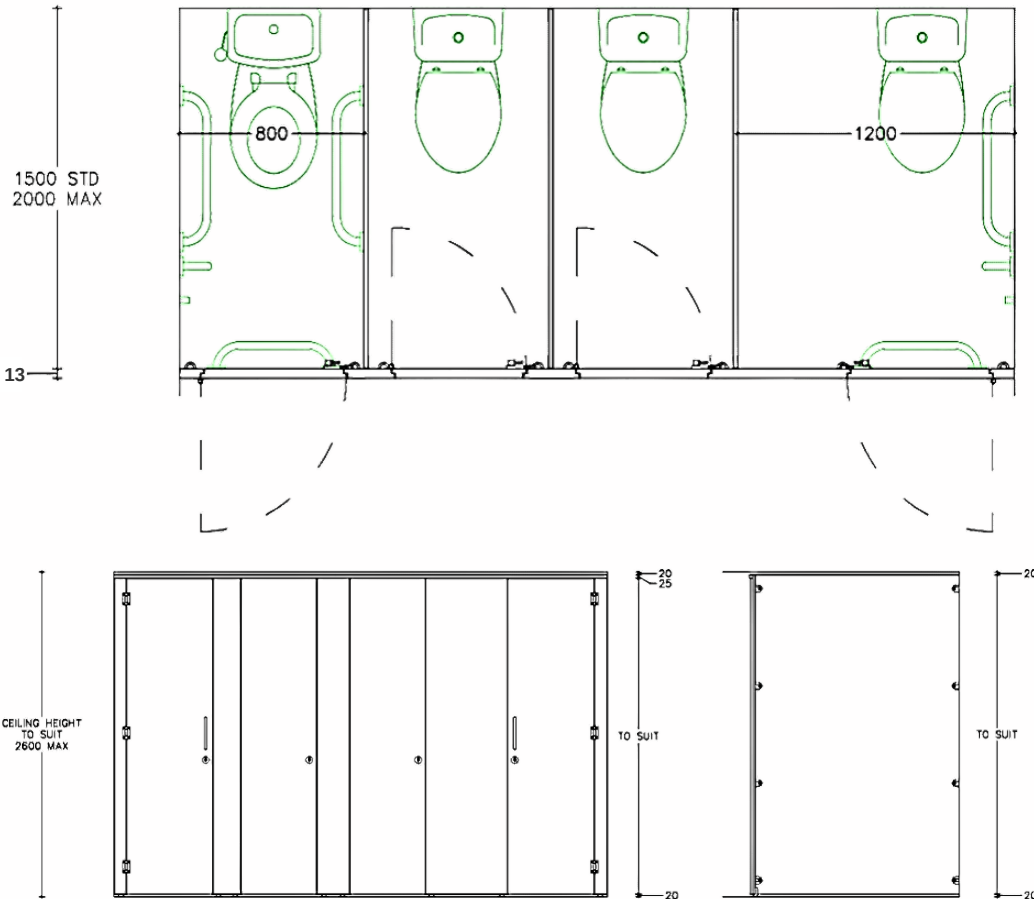
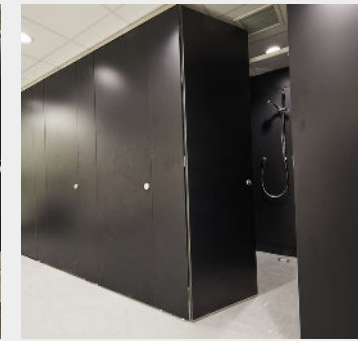
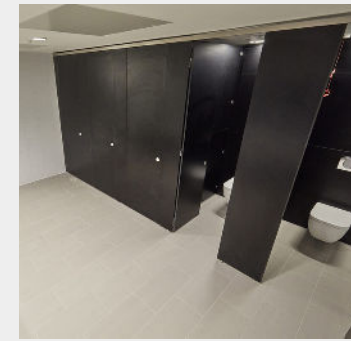
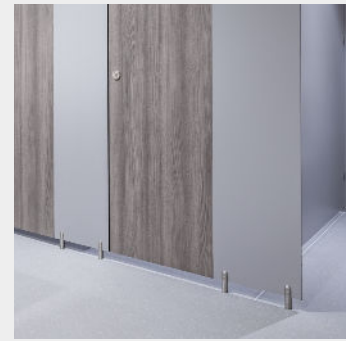
DUKE SGL

Duke offers a sleek, flush fronted cubicle system, giving a premium feel to your washroom whilst keeping within a budget.



DUKE SGL

Rebated doors, minimal floor clearance and stylish fittings combined to make an exclusive wet-area cubicle.



SPECIFICATION

Pilasters/Divisions/Doors:

- SGL Core/Face: Solid grade laminate with colour finish to both sides giving 13mm nominal thickness (recommended for wet area washrooms)
- Panel Detail: Rebated doors/ pilasters to create a flush front cubicle
- Edge: Polished and radiused
- Colour: From the Cube colour selector

Hardware:

All fittings manufactured from high quality brushed stainless steel

- Pedestals: Stainless steel cylindrical design, packing also pieces supplied for uneven floors.
- Hinges: Sprung butt hinges for self-closing doors
- Indicator Bolt: Stainless steel indicator bolt turn with emergency release facility
- Partition Fixing: Partitions secured with stainless cleats and stainless steel bolt-thru fixings
- Headrail: Box section headrail for maximum strength

Features:

- Vanity Units and Duct Panel Systems are available to complement Duke Cubicles
- Flush front façade
- Rebated door sets for enhanced privacy
- Superior quality stainless steel hardware

TOILET CUBICLES SOLUTION FOR:

- Government
- Corporate
- Shower/ Changing Rooms
- Office
- Retail
- Entertainment