

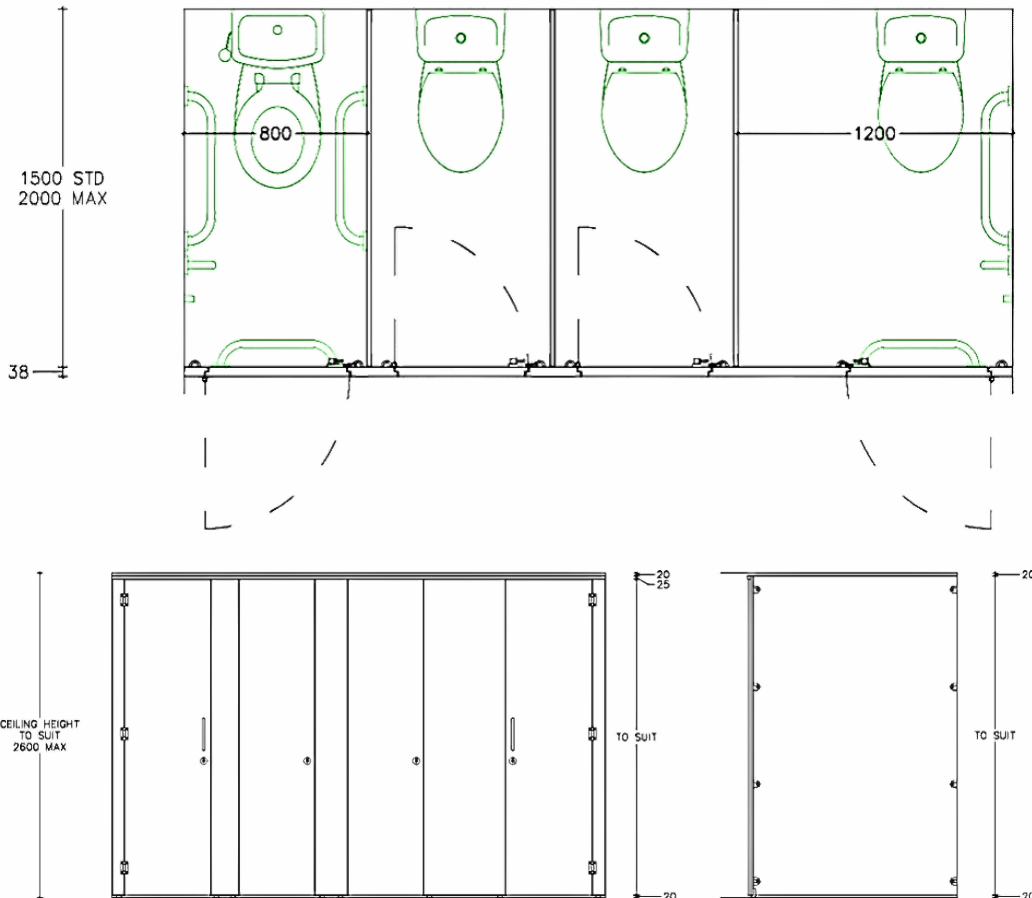
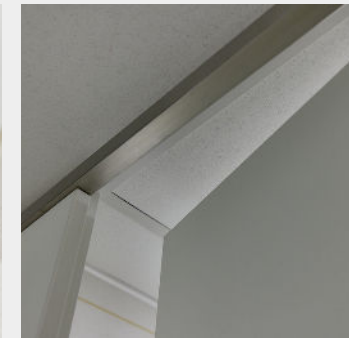
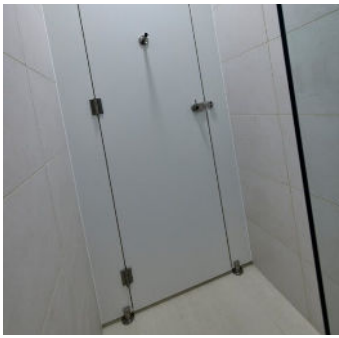
# DUKE HPL

Duke offers a sleek, flush fronted cubicle system, giving a premium feel to your washroom whilst keeping within a budget.



## DUKE HPL

Rebated doors, minimal floor clearance and stylish fittings combined to make an exclusive dry-area cubicle



## SPECIFICATION

### Pilasters/Divisions/Doors:

- HPL Core/Face: High density particleboard faced both sides with high pressure laminate giving cubicle divisions 18mm nominal thickness and doors and fascias 36mm nominal thickness (only recommended for dry area washrooms)
- Panel Detail: Rebated doors/ pilasters to create a flush front cubicle
- Edge: Matching 2mm thick impact resistant ABS lipping
- Colour: From the Cube colour selector

### Hardware:

All fittings manufactured from high quality brushed stainless steel

- Pedestals: Stainless steel cylindrical design, packing also pieces supplied for uneven floors.
- Hinges: Sprung butt hinges for self-closing doors
- Indicator Bolt: Stainless steel indicator bolt turn with emergency release facility
- Partition Fixing: Partitions secured with stainless cleats and stainless steel bolt-thru fixings
- Headrail: Box section headrail for maximum strength

### Features:

- Vanity Units and Duct Panel Systems are available to complement Duke Cubicles
- Flush front façade
- Rebated door sets for enhanced privacy
- Superior quality stainless steel hardware

## TOILET CUBICLES SOLUTION FOR:

- Office
- Corporate
- Entertainment
- Government
- Retail

Call: 01692 774920 | Email: info@cube-install.com

**Cube Install Limited**  
Belmore Place, 6 Bunkell Road, Rackheath Ind Estate, Norwich, NR13 6PX  
www.cube-install.com

Registered in England No. 105718

