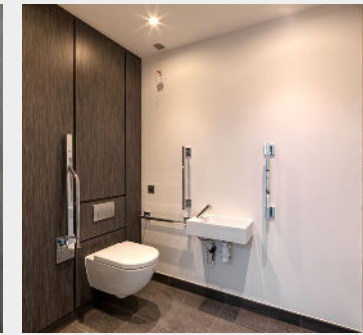
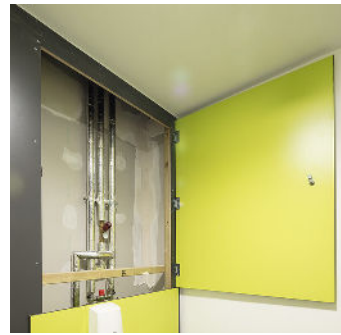


DUCT SYSTEMS



DUCT SYSTEM

Pre-grooved Integrated Panel System supplied complete with fixings. Framing for panels installed onsite by Cube Installers and panels fitted to frames onsite



SPECIFICATION

Panel Options:

HPL Core/Face:

- High density particleboard faced 1 side with high pressure laminate and balancer on reverse giving 18mm nominal thickness
- Edge: Matching 2mm thick impact resistant ABS lipping

SGL Core/Face:

- Solid grade laminate with colour finish to both sides giving 13mm nominal thickness
- Edge: Polished and radiused

Colour: from the Cube colour selector

Cut-outs: not included unless mentioned on quote

Fixings:

- Panel Fixing: Concealed Keku clips (lift-off or pull-out pattern)
- Shadow Strips: 18mm thick laminated exterior MDF shadow gaps supplied with edges grooved to receive our secret fixing clips.

Frames:

- Frames erected onsite by Cube Installers.
- Factory pre-grooved panels fitted to frames onsite

Options:

Height: Full room height/ Cubicle Height/ Low level removable access panels

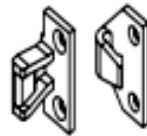
Floor Clearance: Panels commence at 100mm above finished floor level to allow for skirting detail by others.

Panels: Hinged panels available as an alternative to lift-off/ pull-out

Panel Finishes: Alternative laminate finishes/patterns to those offered on the Cube colour selector can be sourced to meet your requirements.



Pull-out Clips



Lift-off clips

