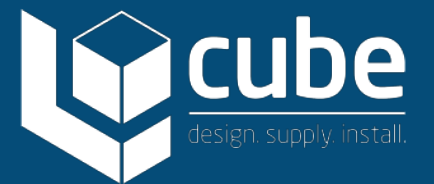




Vista HPL The Vista Cubicle system offers full height cubicles with a flush façade, clean aesthetics and sleek fittings.



Vista HPL

Rebated doors, minimal floor clearance and full height panels combined.

Specification

Pilasters/Divisions/Doors:

Panel Spec Options:

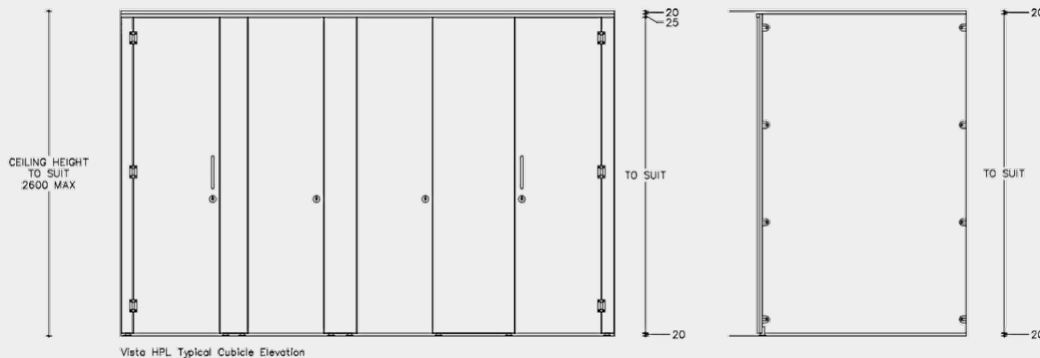
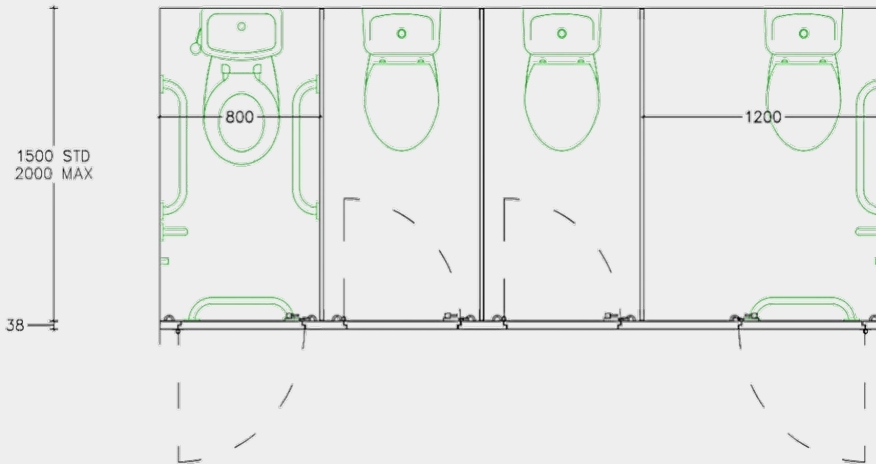
Please note we only recommend this HPL Panel Option for dry area washrooms

- HPL Core/Face: High density particleboard faced both sides with high pressure laminate giving cubicle divisions 18mm nominal thickness and doors and fascias 36mm nominal thickness
- Panel Detail: Rebated doors/ pilasters to create a flush front cubicle
- Edge: Matching 2mm thick impact resistant ABS lipping
- Colour: From the Cube colour selector

Hardware:

All fittings manufactured from high quality brushed stainless steel

- Pedestals: Stainless steel cylindrical design, packing also pieces supplied for uneven floors.
- Hinges: Sprung butt hinges for self-closing doors
- Indicator Bolt: Stainless steel indicator bolt turn with emergency release facility
- Partition Fixing: Partitions secured with stainless cleats and stainless steel bolt-thru fixings
- Headrail: Box section headrail for maximum strength



Toilet Cubicles solution for:

▶ Office

▶ Entertainment

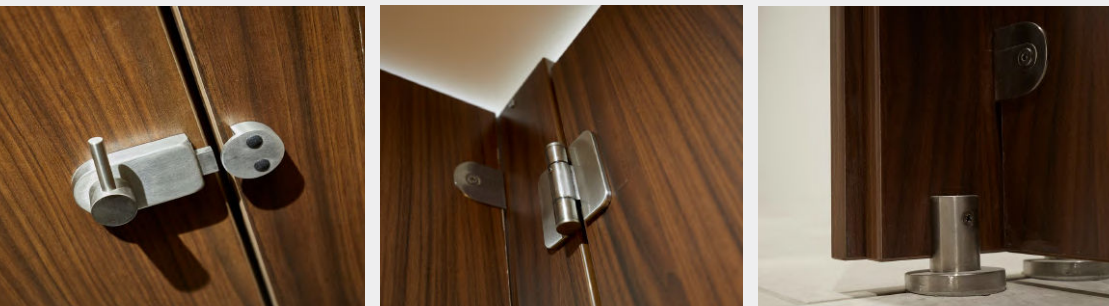
▶ Retail

Features:

- Flush front façade
- Rebated door sets for enhanced privacy
- Superior quality stainless steel hardware
- Innovative concealed pilaster fixing
- 20mm minimal floor clearance
- Stepped panel to incorporate headrail

Complementary Options:

- Vanity Units and Duct Panel Systems are available to complement Vista Cubicles



Call: 01692 632000 | Email: info@cube-install.com

Cube Install Limited

Belmore Place, 6 Bunkell Road, Rackheath Ind Estate, Norwich, NR13 6PX

www.cube-install.com

Registered in England No. 105718

