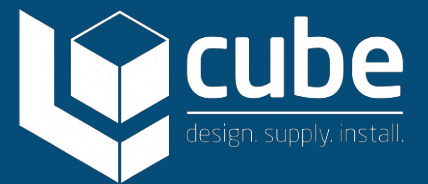




Kinder



Kinder

A Solid Grade Laminate low height cubicle system designed for young users in high traffic and wet area washrooms

Specification

Pilasters/Divisions/Doors:

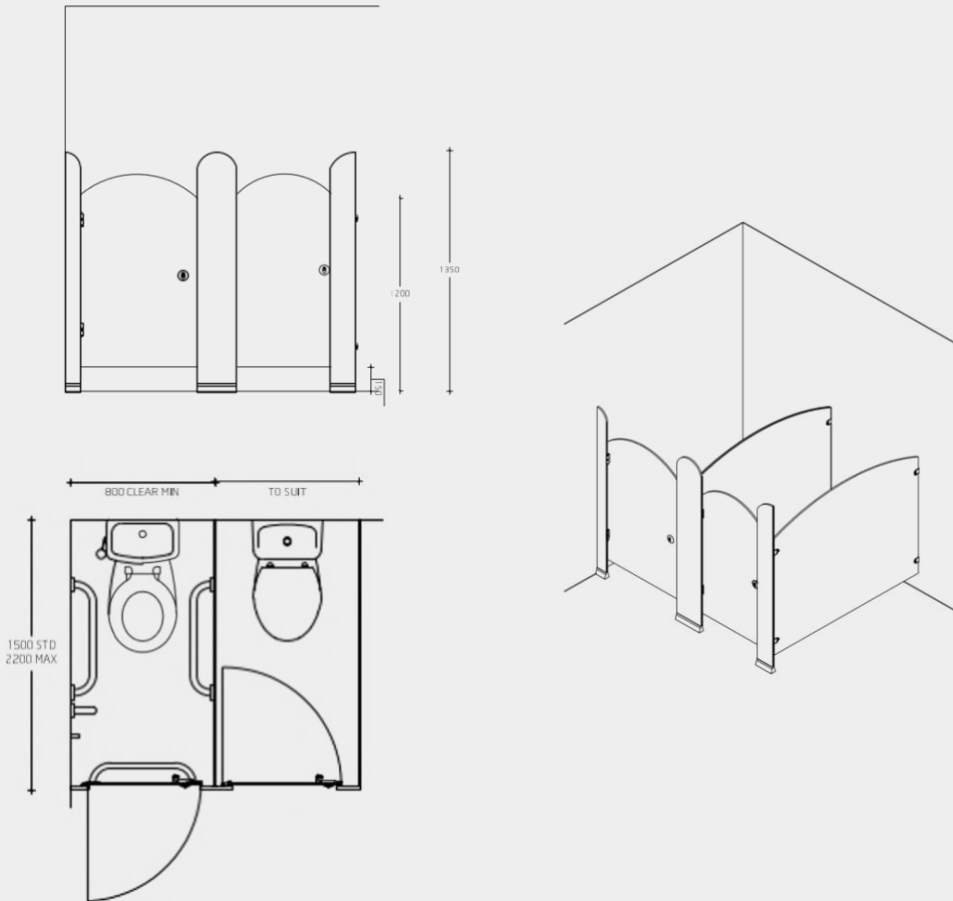
Panel Spec:

- SGL Core/Face: Solid grade laminate with colour finish to both sides giving 13mm nominal thickness
- Edge: Polished and radiused
- Colour: From the Cube colour selector
- Panel Detail: Curved top pilasters, doors & divisions at low height - suitable for adult supervision

Hardware:

All fittings manufactured from high quality polished aluminium

- Pedestals: Structural floor fixed pilaster shoes
- Hinges: High strength insert with anti-breakout sleeve and self-closing cams
- Indicator Bolt: Easy slide action lock with integrated buffer and emergency door release facility
- Partition Fixing: Partitions secured with aluminium D brackets and stainless steel bolt-thru fixings
- Headrail: D section headrail for maximum strength
- Coat Hook: Matching coat hook, 1 per cubicle



Toilet Cubicles solution for:

► Nurseries

► Early Years Foundation Stage

Options:

Panel Finishes – Extra Cost Options:

- Cube Grafix range
- Specially sourced laminates to meet your exact requirements

Height:

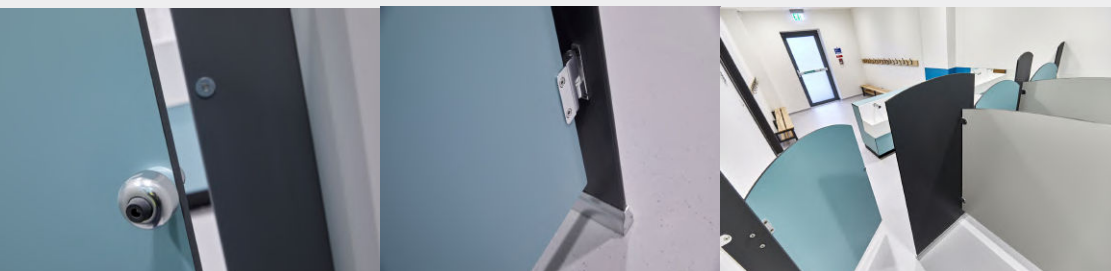
- Height manufactured to request

Complementary Options:

- Vanity Units and Duct Panel Systems

Hardware:

- Powder coated to match RAL colours
- Magnetic Catch Doors (as first image on opposite page)



Call: 01692 632000 | Email: info@cube-install.com

Cube Install Limited

Belmore Place, 6 Bunkell Road, Rackheath Ind Estate, Norwich, NR13 6PX

www.cube-install.com

Registered in England No. 105718

Acclaim
Accreditation

Constructionline
Gold Member

ISO 45001
Cert No. 15847
ISO 9001
ISO 14001
ISO 45001