



Perfect Washroom Privacy

Hive by Cube



**Hive
keeps pupil
privacy totally
secure**



Anti-finger trap hinges are a standard requirement in the education washroom industry, however, this feature is being mis-used.

Smartphones are being pushed through the gaps to take photos of the users inside, which exploits their privacy.

School toilet cubicles now need to be anti-finger trap and phone proof.



The Hive Cubicle fulfils your architectural design, build and privacy requirements.

Our unique anti-finger trap and smartphone blocker offers a safe, hygienic and fully sealed environment, keeping pupils' privacy totally secure.

And with its simple modular construction, adaptable enough to fill any space, when it comes to educational washrooms – we're the perfect fit.



Adaptable



Every Hive washroom installation project is different. Our bespoke units can be constructed to fit into your space.

Simple



The Hive is designed to seamlessly fit into your architectural plans, offering a simple solution that meets the necessary regulatory requirements.

Private

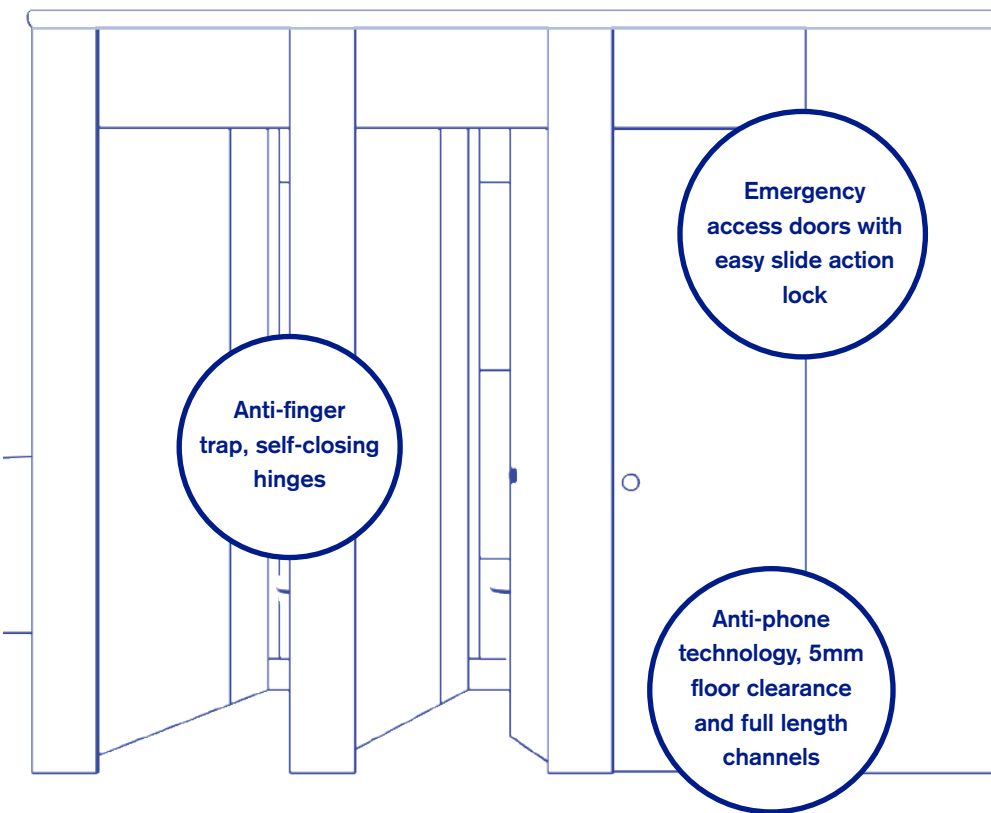


With the advent of smartphones and other digital recording devices, it's now imperative that washroom cubicles offer a safe, sealed environment for pupils. Privacy is built into every single Hive washroom as standard.



Hive

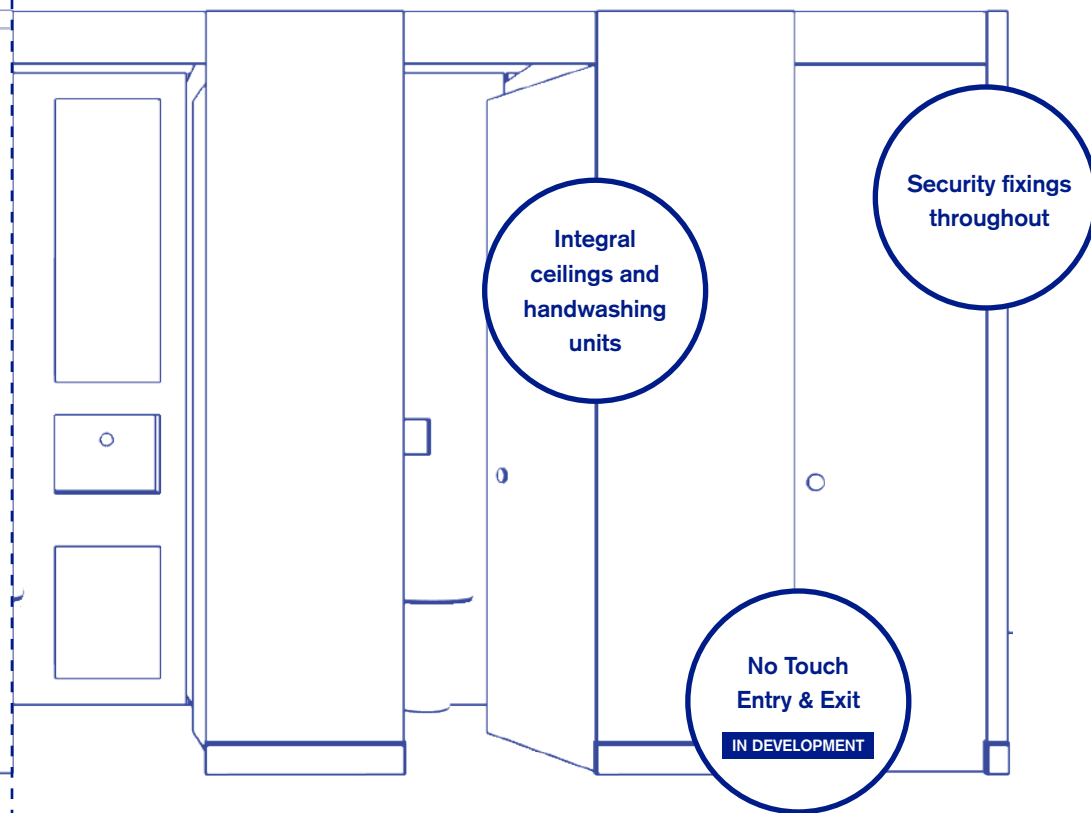
Standard Configuration



- Anti-phone technology & no peep gaps
- Full length channels to all junctions for maximum durability and privacy
- Ant-finger trap, self-closing hinges
- Easy slide action lock with red/white indicator and tamper proof release
- Emergency accessible doors
- Security fixings throughout to prevent tampering

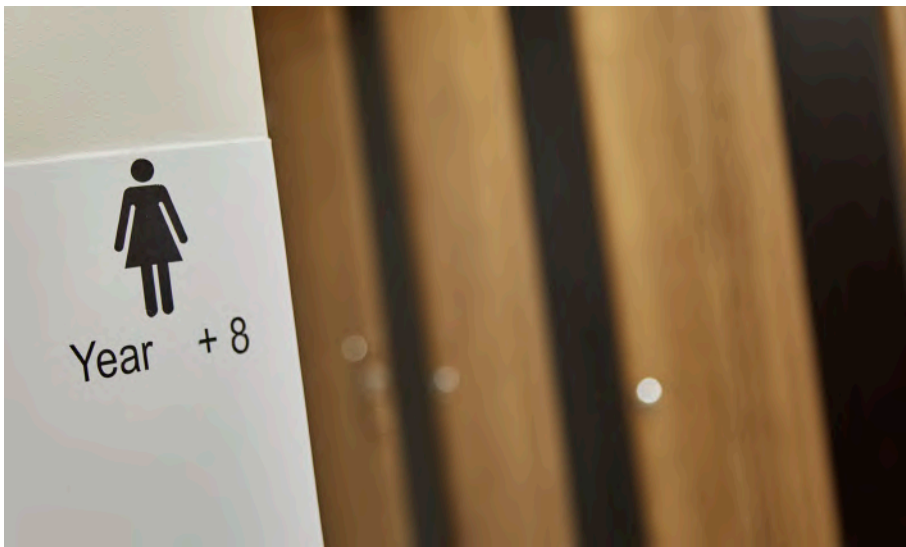
Hive+

Modular construction with integral ceilings and handwash facilities



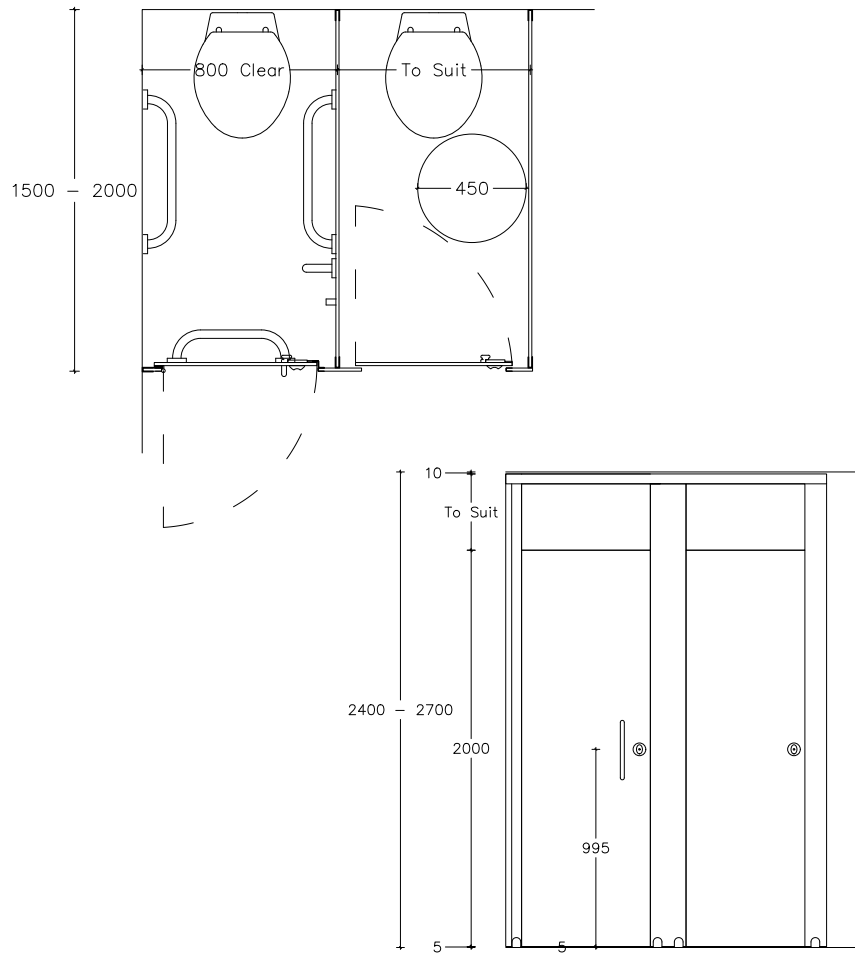
- Available as fully modular system with integral ceilings for minimal trade co-ordination
- Integral handwashing units within cubicle for maximum hygiene and privacy
- Anti-phone technology & no peep gaps
- Emergency accessible doors
- Security fixings throughout to prevent tampering.
- No touch Entry and Exit in development for increased hygiene

Hive Cubicle



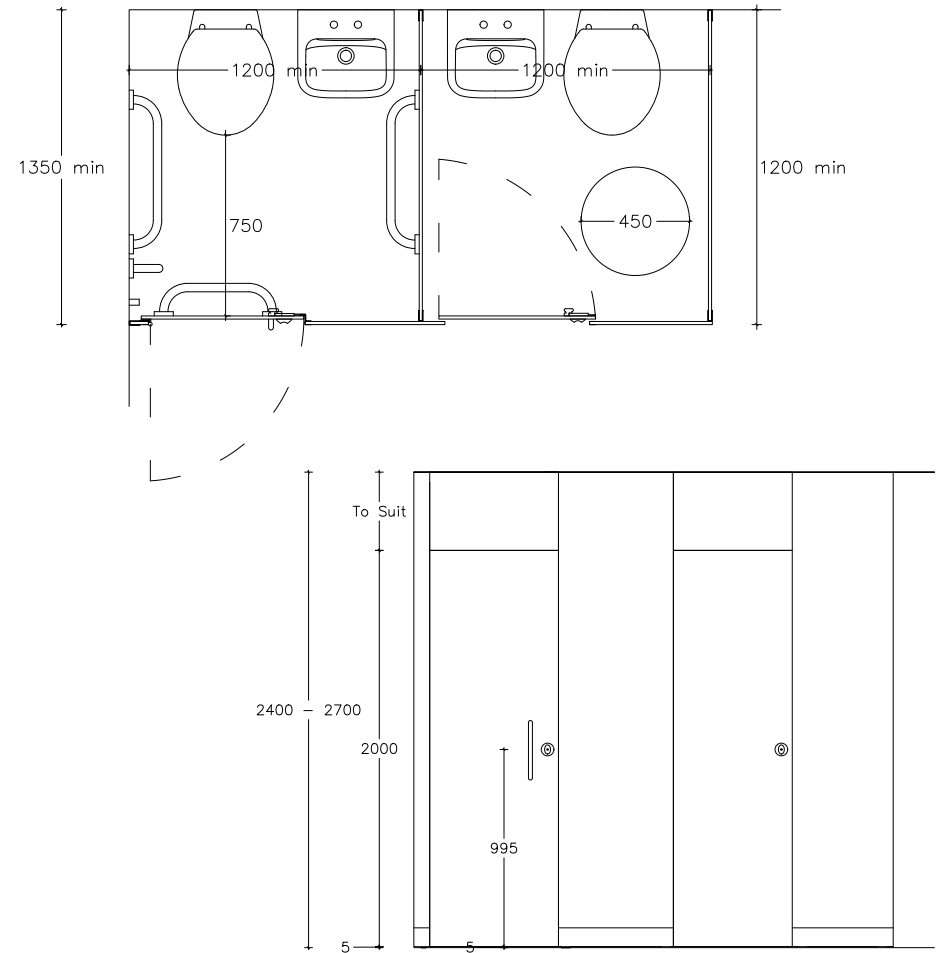
Hive

Standard Configuration



Hive+

Integral Handwash Configuration



Pilasters/Divisions/Doors

Panel Detail:

Full height pilasters, standard height door with overpanel and split divisions joined with low profile aluminium H section.

Panel Specification Options:

SGL:

- Core/Face: Wipe clean solid grade laminate with colour finish to both sides giving 12.5mm.
 - Edge: Polished and radiused.
-

Colours:

From standard selection – same colour dividing panels and fascias with contrasting doors.

Hardware

All fittings manufactured from anti rust & vandal proof satin anodised aluminium.

Pedestals: Low profile aluminium giving 5mm floor clearance.

Hinges: 3nr high strength aluminium, anti-finger trap hinges per door with self-closing cams and lift off facility for emergency access.

Smart-phone Integral seal to prevent intrusion of smart phones.

Blocker:

Indicator Bolt: Easy slide action lock with integrated buffer, emergency door release facility using security key and red white indicator suitable for users with visual impairment.

Partition Fixing: Partitions secured with full length aluminium channels with anti-tamper security fixings for maximum strength and privacy.

Headrail: D section headrail for maximum strength.

Coat Hook: Matching coat hook, 1 per cubicle.

Dimensions

Overall Height: 2400mm (std)

Widths: from 700mm

Floor Clearance: 5mm

Door: Overpanel clearance: 5mm

Depth: 1500mm standard

Panel Thickness:

- SGL:12.5mm
-

Options:

- Opaque overpanels for visual alert from fire alarm indicators.

Design, manufacture and installation of education washroom systems

Cube Install takes full responsibility for the design, supply and installation of toilet cubicles, IPS duct panelling, vanity units, wash troughs, lockers and benching.

Our mission is to remove supplier – installer conflict by creating a precision flow. We do this by taking responsibility for each project from the earliest stages and keeping our clients informed at every stage of our process.

Our Process



1. Project consultancy



2. Survey & design



3. Manufacture



4. Installation



5. Maintenance

Ancillary Items

IPS Duct Panelling:

Our highly versatile duct systems are manufactured bespoke to each project. Primarily used to conceal plumbing, Duct Systems provide a hygienic, stylish and tidy solution to your washroom, surgery or medical room requirements.



Removable panels offer easy access for maintenance works. Available in a choice of materials, heights and colours and with a factory pre-framed option for super fast installation.

Vanity Units:

Our vanity systems enhance any washroom, providing stylish and practical solutions to hand wash areas. With impervious Solid Grade Laminate under panels and a variety of material options for the tops these units will survive whatever the splash.



Wash-troughs:

For optimum aesthetics, durability and user experience our vanity unit offering extends to include versatile handwash troughs in both Solid Surface materials and stainless steel.



Grab Rails & Dispensers:

For Ease of trade co-ordination, we can supply and install grab rails, doc-m packs and dispensers for soap, hand towels and toilet tissue with the Hive cubicle system.



Inspiration Academy

An academy creating the great minds of the future. We used a modern approach to create an open access, anti-vandalism washroom.



Project

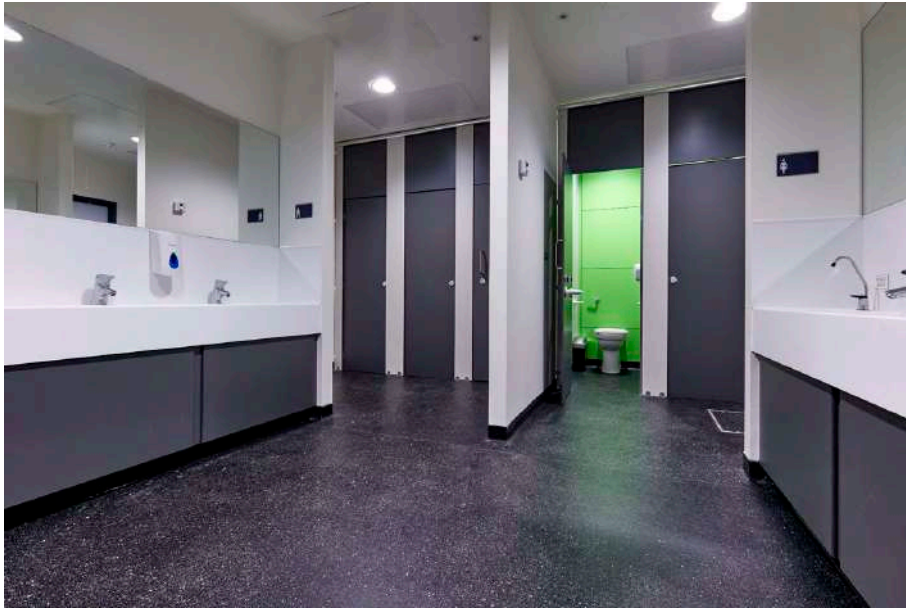
Inspiration Academy, Dartford, part of The Leigh UTC group has a specialised learning programme focused on science, technology, engineering and mathematics. The academy prepares students for future careers and creates lifelong learners who will make a difference to our world.

Brief

The washroom design moves away from the traditional enclosed rooms and provides open access to the circulation areas. This is an increasingly popular solution to combat the bullying and vandalism toilets have been known for.

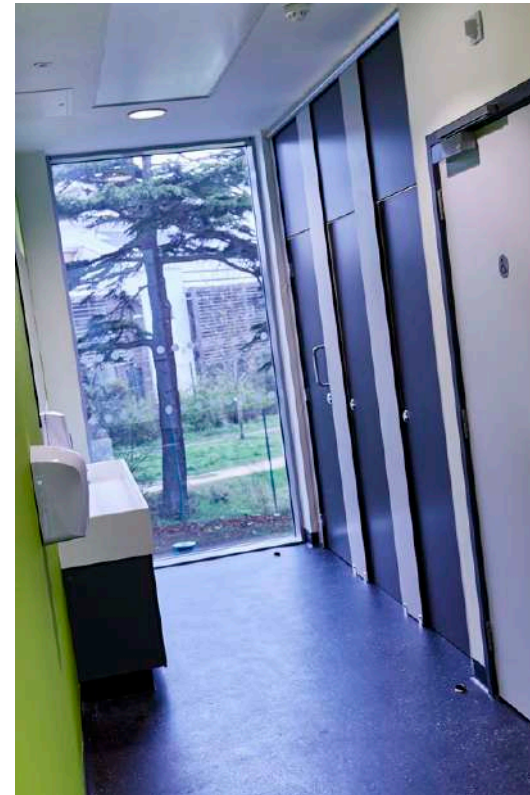
The washroom design brief required anti-vandal full height cubicles with additional measures to prevent anti-social phone usage.

Case Studies



Solution

Cube Utilised full height cubicles to provide the extra privacy required for open plan School Washrooms. To meet the project specification and client requirements, privacy trims were designed and installed around the doors to prevent illicit phone camera use.



Maidstone Technology School

A state-of-the-art new secondary school offering a specialist curriculum for Science, Technology, Engineering and Maths.



Project

A new build school for the Valley Invicta Academies Trust to provide a learning space offering a specialist curriculum for those students with a real flair for STEM (Science, Technology, Engineering, Maths) subjects.

Brief

The building is a large horseshoe-shaped three-storey structure with a simple but inspiring internal environment which provides a professional backdrop to learning. The open plan washroom areas are spread evenly over the 3 floors in the core of the building and provide an open plan layout for ease of supervision. Due to client requirements on previous projects, the contractor requested a cubicle solution which kept the pupils privacy secure whilst meeting necessary anti-finger trap regulations.



Solution

Cube were able to offer the perfect solution in these open plan washroom areas utilising their extensive experience on similar projects and providing cubicles with 5mm floor clearance and anti-phone trims to the doors. Anti-vandal and rust-proof aluminium fittings secure the panels which extend to the 2700mm ceiling for maximum privacy.



Perfectly secure your next educational washroom project

Book a Hive Cubicle
demonstration on:

Telephone:
+44 (0)1692 632 000

Email:
info@cube-install.com





hive

Hive by Cube

Cube Install
The Granary Business Park,
School Road,
Neatishead,
Norwich
NR12 8BU

Telephone: +44 (0)1692 632 000
www.cube-install.com