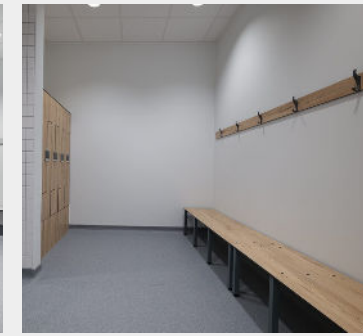
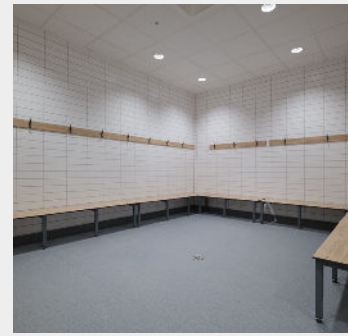
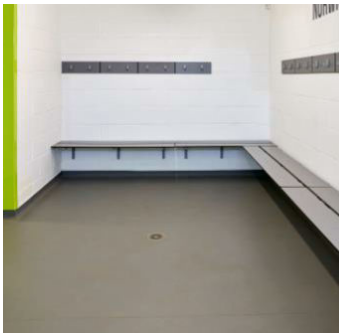


BENCH SYSTEMS

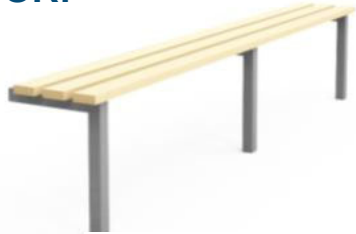


BENCH SYSTEMS

Designed to provide exceptional long-life solutions for cloakroom and changing areas



WALL/FLOOR:



FREESTANDING:



DOUBLE SIDED ISLAND:



SPECIFICATION

Bench Configurations:

- Cantilever Benching: Cantilever bench for back to wall applications
- Wall/Floor Benching: Wall to floor bench for back to wall applications
- Free-Standing Benching: Free-standing bench suitable for back to wall and island applications
- Island Benching: Double sided island bench complete with integrated hookboard and backrest

Frame:

- Type: 38mm steel box section, fully welded and zinc treated.
- Finish/Colour: Polyester powder coated finish

Seat:

- Material - 13mm Solid Grade Laminate slats (for wet areas) / Heavy Duty Hardwood Ash slats
- Colour(SGL option only) - Refer to the Cube colour selector

Dimensions:

Seat Depth:

- Island Benches - 560mm-700mm
- Free Standing Benches - 200mm-700mm
- Wall to floor - 300mm-700mm
- Cantilever - 300mm-450mm

Height: 450mm from floor level to top of seat /Island benching 1250mm std from seat height to top of hookboard

Options:

Matching hookboards and backrests/ Adjustable foot fixing/ Shoe trays/ Shelving - all available as extras

Frame Material: Stainless steel frames available on request.