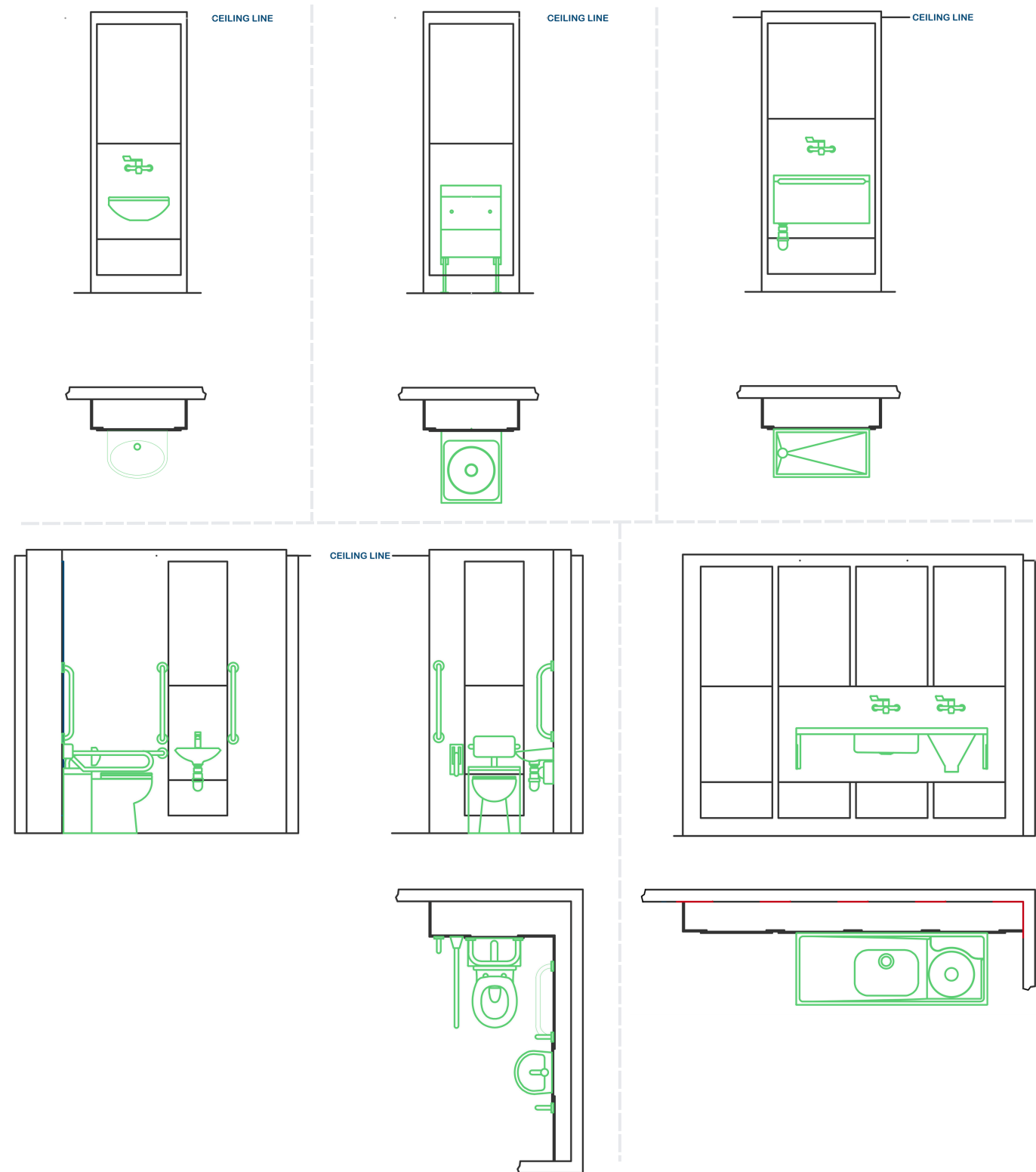


HealthDuct

Technical Datasheet



DIMENSIONS

Max Overall Height
- 2700mm

TECHNICAL DETAILS

Access Panel

- Material**
- Hygienic Solid Grade Laminate
- Edge Treatment**
- Full polished and radiused
- Thickness**
- 13mm
- Horizontal Panel Joints**
- Dirt resistant butt jointed, no gap
- Vertical Panel Joints**
- Separated by shadow panel
- Vertical Panel Joints**
- Fixing clips with pull-out facility
 - Fixing clips with lift-off facility
 - Hinges for fixed position, openable access panels
 - Turn locks for hinged panels
 - Security fixings for clip fixed panels
- Dimensions**
- Width and Height to suit site dimensions and panel application

Shadow Panel

- Material**
- Solid Grade Laminate
- Edge Treatment**
- Straight Cut
- Thickness**
- 13mm
- Components**
- High strength fixing into framework

TECHNICAL DETAILS

Plinth

- Material**
- Solid Grade Laminate
- Edge Treatment**
- Straight Cut
- Thickness**
- 13mm
- Components**
- High strength fixing into framework
 - Compatible with coved vinyl flooring.

Framing

- Material**
- Soft wood for bespoke fitting to surroundings
- Components**
- Receiving pull-out clips
 - Receiving lift-off clips
 - High strength fixing into framework

