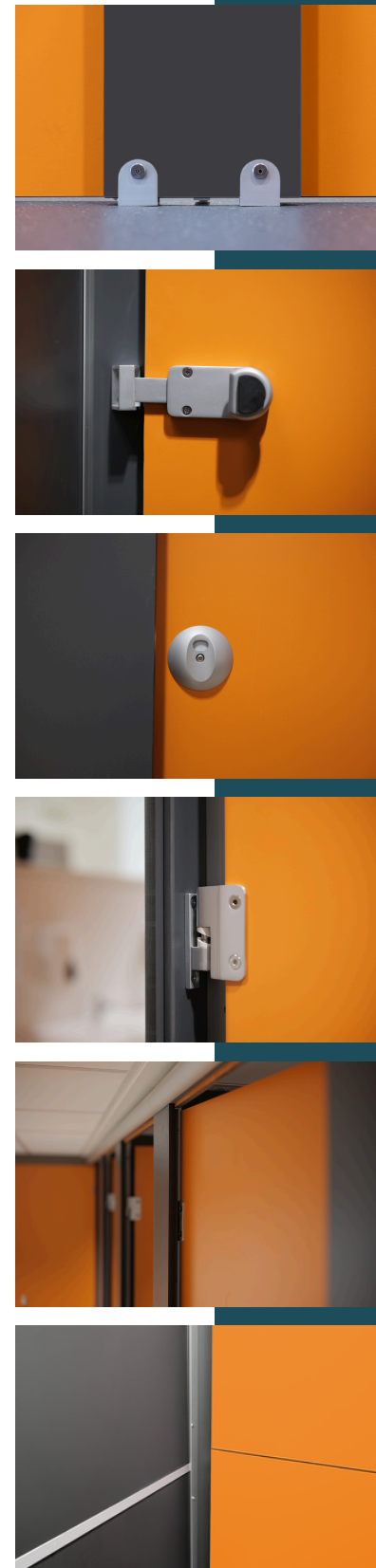
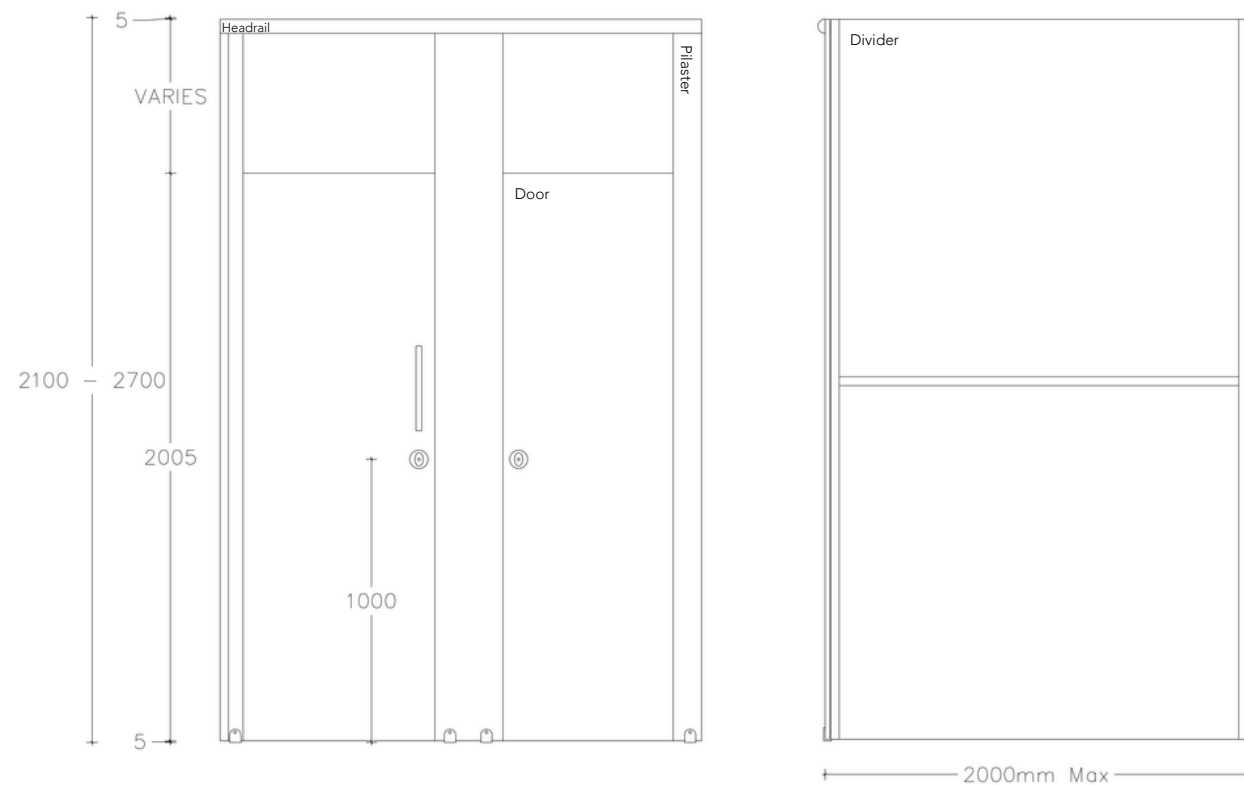
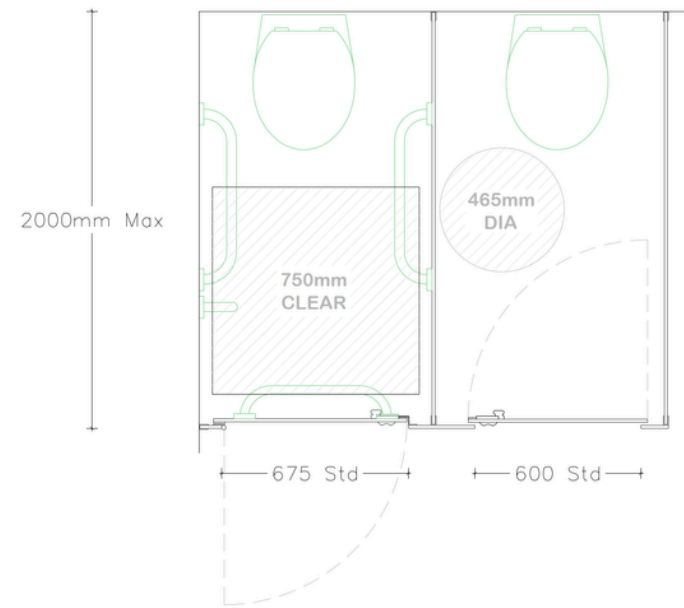


# Hive® Privacy

Provides maximum DfE-compliant privacy and durability.



## DIMENSIONS

- Max Overall Height
  - 2700mm
- Max Depth
  - 200mm
- Floor Clearance
  - 5mm

## TECHNICAL DETAILS

### Door Panel

- Material
  - Solid Grade Laminate
- Edge Treatment
  - Polished and radiused
- Thickness
  - 13mm
- Standard Dimensions
  - Inward Opening H 1850mm x W 650mm, 25mm overlap with pilaster either side
  - Outward Opening H 1850mm x W 700mm, 25mm overlap with pilaster either side
  - Size to suit site requirements and relevant building regulations
- Components
  - Indicator Face Plate
  - Indicator Slide Bolt
  - Coat Hook
  - Self Closing Hinges

### Over Door Panel

- Material
  - Solid Grade Laminate
- Edge Treatment
  - Polished and radiused
- Thickness
  - 13mm
- Standard Dimensions
  - H Varied to suit ceiling height x W - width of door
- Positioning
  - Allowing emergency access door lift off facility

### Pilaster Panel

- Material
  - Solid Grade Laminate
- Edge Treatment
  - Polished and radiused
- Thickness
  - 13mm
- Standard Dimensions
  - H 2695mm x W - varies to suit site dimensions
- Components
  - Pedestal
  - Indicator Slide Bolt Keep
  - Headrail
  - Fixing Cleat
  - Smart-phone seal

## TECHNICAL DETAILS

### Divisions

- Material
  - Solid Grade Laminate
- Edge Treatment
  - Polished and radiused
- Thickness
  - 13mm
- Standard Dimensions
  - H 1850mm x W 1500mm - varies to suit site dimensions. Dimensions from back of cubicle to front
- Components
  - Fixing Cleat

### Hardware

- Indicator Plate
  - Satin Anodised Aluminium
  - Staff access only emergency release facility
  - Circular face plate
  - Concealed fixings
  - Red/White occupancy indicator
  - Face Fixed
- Indicator Bolt
  - Satin Anodised Aluminium
  - Easy slide action lock
  - Integrated buffer
  - Face Fixed
- Keep
  - Satin Anodised Aluminium
  - Face Fixed
- Hinge
  - Satin Anodised Aluminium
  - Self closing cams
  - Breakout-resistant fixing sleeve
  - Anti-finger trap
  - Lift-off facility for emergency access
- Cleat
  - Satin Anodised Aluminium
  - D brackets
  - Stainless Steel bolt-through fixings
- Pedestal
  - Satin Anodised Aluminium
  - Adjustable height to accommodate uneven floors
  - Giving 150mm floor clearance
  - Solid rolled design
- Headrail
  - Satin Anodised Aluminium
  - High strength D profile