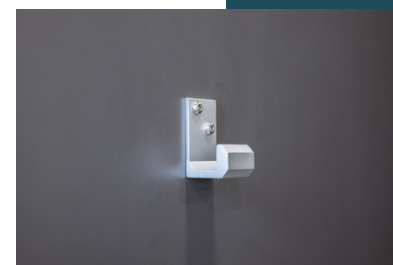
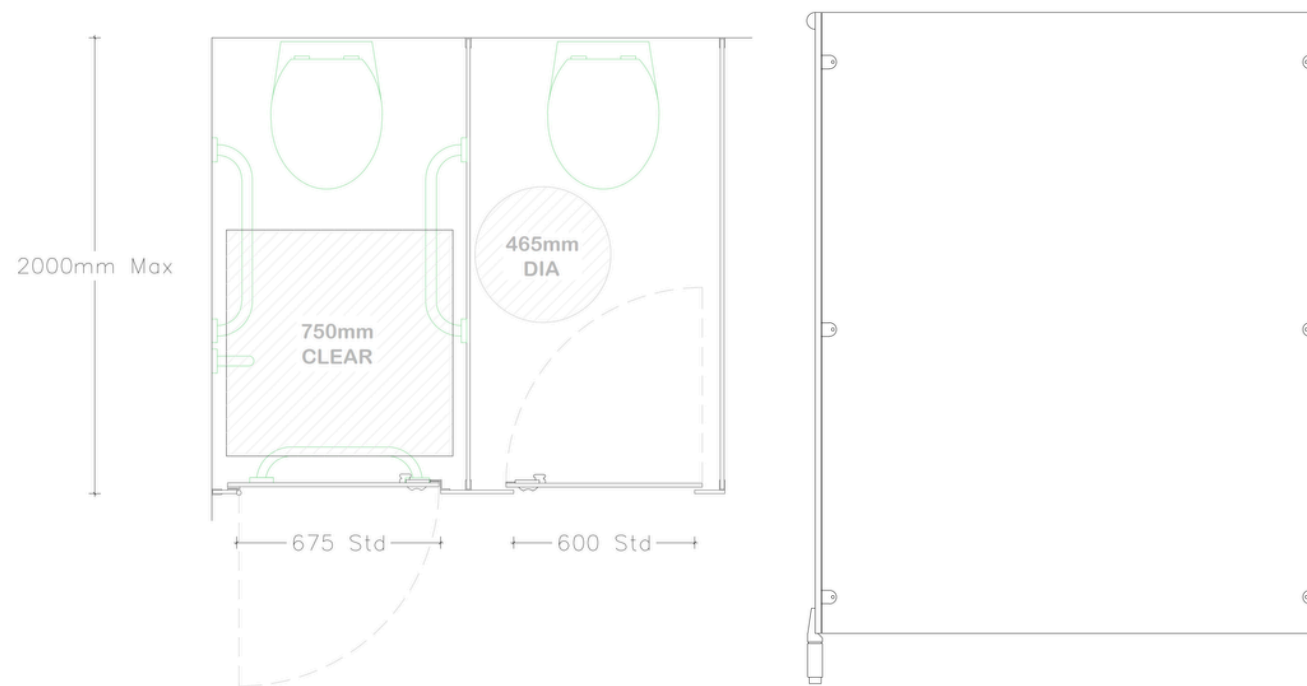
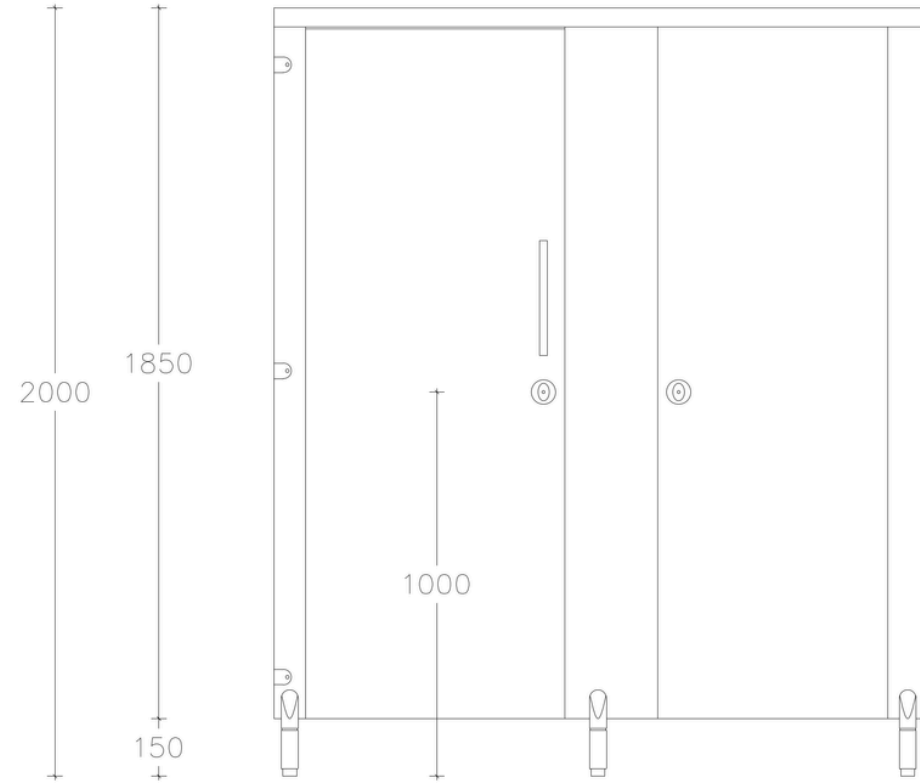


# Base HPL

Designed for lighter-use washrooms in commercial and industrial spaces.



## DIMENSIONS

- Max Overall Height - 2000mm
- Max Depth - 1500mm
- Floor Clearance - 150mm

## TECHNICAL DETAILS

### Door Panel

- Material - High Pressure Laminate
- Edge Treatment - 2mm thick bounded ABS lipping
- Thickness - 18mm
- Standard Dimensions
  - Inward Opening H 1850mm x W 650mm, 25mm overlap with pilaster either side.
  - Outward Opening H 1850mm x W 700mm, 25mm overlap with pilaster either side
  - Size to suit site requirements and relevant building regulations

### Components

- Indicator Face Plate
- Indicator Slide Bolt
- Coat Hook
- Self Closing Hinges

### Pilaster Panel

- Material - High Pressure Laminate
- Edge Treatment - 2mm thick bounded ABS lipping
- Thickness - 18mm
- Standard Dimensions - H 1850mm x W - varies to suit site dimensions
- Components
  - Pedestal
  - Indicator Slide Bolt Keep
  - Headrail
  - Fixing Cleat

## TECHNICAL DETAILS

### Divisions

- Material - High Pressure Laminate
- Edge Treatment - 2mm thick bounded ABS lipping
- Thickness - 18mm
- Standard Dimensions - H 1850mm x W 1500mm - varies to suit site dimensions. Dimensions from back of cubicle to front

### Components

- Fixing Cleat

### Hardware

- Indicator Plate
  - Satin Anodised Aluminium
  - Emergency release facility
  - Circular face plate
  - Concealed fixings
  - Red/White occupancy indicator
  - Face Fixed
- Indicator Bolt
  - Satin Anodised Aluminium
  - Easy slide action lock
  - Integrated buffer
  - Face Fixed

### Indicator Bolt

- Satin Anodised Aluminium
- Easy slide action lock
- Integrated buffer
- Face Fixed

### Keep

- Satin Anodised Aluminium
- Face Fixed

### Hinge

- Satin Anodised Aluminium
- Self closing cams
- Breakout-resistant fixing sleeve
- Anti-finger trap
- Lift-off facility for emergency access

### Cleat

- Satin Anodised Aluminium
- D brackets
- Stainless Steel bolt-through fixings

### Pedestal

- Satin Anodised Aluminium
- Adjustable height to accommodate uneven floors
- Giving 150mm floor clearance
- Solid rolled design

### Headrail

- Satin Anodised Aluminium
- High strength D profile

Call: 01692 774920 | Email: info@cube-install.com

Cube Install Limited

Belmore Place, 6 Bunkell Road, Rackheath Ind Estate, Norwich, NR13 6PX

www.cube-install.com

Registered in England No. 10501718

